



**TECHNICKÝ A ZKUŠEBNÍ ÚSTAV STAVEBNÍ PRAHA, s.p.**  
**Technical and Test Institute for Constructions Prague**

Akreditovaná zkušební laboratoř, Autorizovaná osoba, Certifikační orgán, Inspekční orgán  
Accredited Test Laboratory, Authorised Body, Certification Body, Inspection Body

Branch 0300 Plzeň

# REPORT

No. 030 – 052872

on determination of ceramic tiles

**Customer:** Tubądzin Management Group Sp. z o.o.

Cedrovice Parcela 11

95-035 Ozorków

Poland

Order no.: –

from 2016-02-03

**Order No.:** Z030160042

Enclosures: –

This Report has been made in duplicate. The first original copy is for the customer, the other will be filed along with other documentation in TZÚS Plzeň.

Person responsible for the wording of this Report:

**Ing. Hana Kotorová**  
Report Author

Person responsible for the correctness of this Report:



**ing. Alexander Trinner**  
director of branches

Plzeň 24<sup>th</sup> February 2016

Stamp TZÚS - Plzeň testing laboratory

**Statement:**

- 1) The test results relate to the items under test (samples) only.
- 2) This report may not be reproduced otherwise than complete without the written consent of TZÚS.

## 1 Initial Data

### 1.1 Assignment

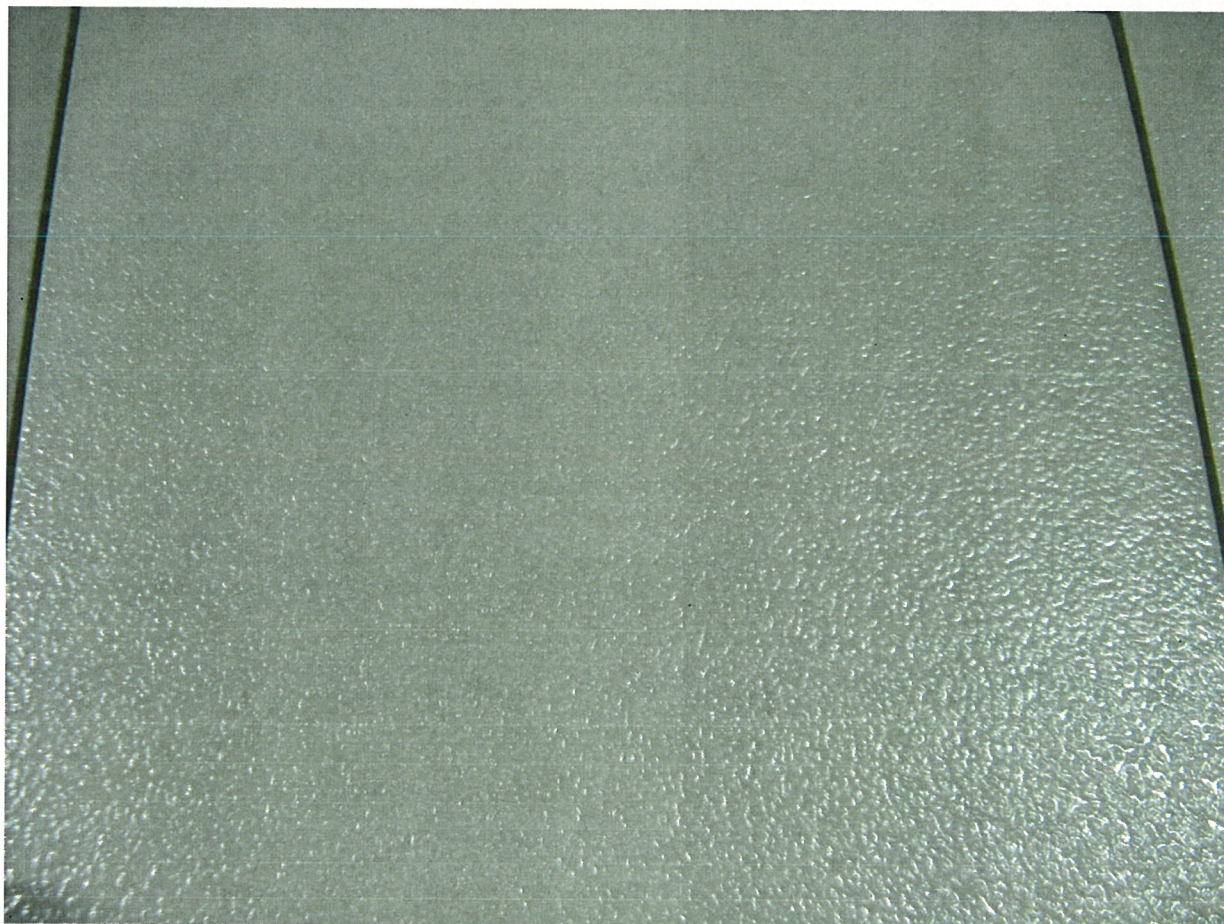
- Execution of tests of slipperiness of ceramic tiles according the requirement of the client:
  - **determination of slipperiness – walking methods – ramp test** (barefoot method) according **DIN 51097, P CEN/TS 16165 (method A)**

### 1.2 Samples

- Sample specification: ceramic tiles dry – pressed declared EN 14411, Bla, annex G type: **MONO R format: 200/200 mm**
- Producer: **Tubądzin Management Group Sp. z o.o., Cedrovice Parcela 11, 95-035 Ozorków, Poland**
- Samples supplied on 10. 02. 2016
- Tests were initiated on: 2016-02-10
- Tests were completed on: 2016-02-25.

## 2 Sampling Method

The test samples were supplied by the customers. The samples were recorded this way:  
no. sample: VZ 030160099





### 3 Testing Procedures

DIN 51097

Testing of floor coverings determination of anti – slip properties wet-loaded barefoot areas; walking method – ramp test

P CEN/TS 16165

Determination of slip resistance of pedestrian surfaces – Methods of evaluation

### 4 Measurements and Tests

#### 4.1 Determination of slipperiness – walking methods – ramp test (barefoot method) DIN 51097, P CEN/TS 16165 (method A)

| Testing samples                | Critical angle of slip classification according DIN 51097 |
|--------------------------------|---|
| Type MONO R format: 200/200 mm | 17,0° A   |

### 5 Conclusion

- Based on the results of the test pursuant to DIN 51097, P CEN/TS 16165 (method A) the **tested ceramic tiles dry – pressed declared EN 14411, Bla, annex G type: MONO R format: 200/200 mm**, produced in the **Tubądzin Management Group Sp. z o.o., Cedrovice Parcela 11, 95-035 Ozorków, Poland** classified **in group A** (angle of slip 17°) and can be used for assembly of safe paving, e.g. the corridors for walking barefoot (mostly dry), joint and separate dressing rooms, bottom of pools in the area for non-swimmers, when the whole area of water depth greater than 80 cm, sauna and relaxation rooms (mostly dry) etc.)

It should be pointed out that to ensure proper slip resistant function of ceramic tiles in the sense of stated conclusion, it is needed to maintain surface in clean conditions and without significant wear. Other properties were not subject to testing.

END OF REPORT

